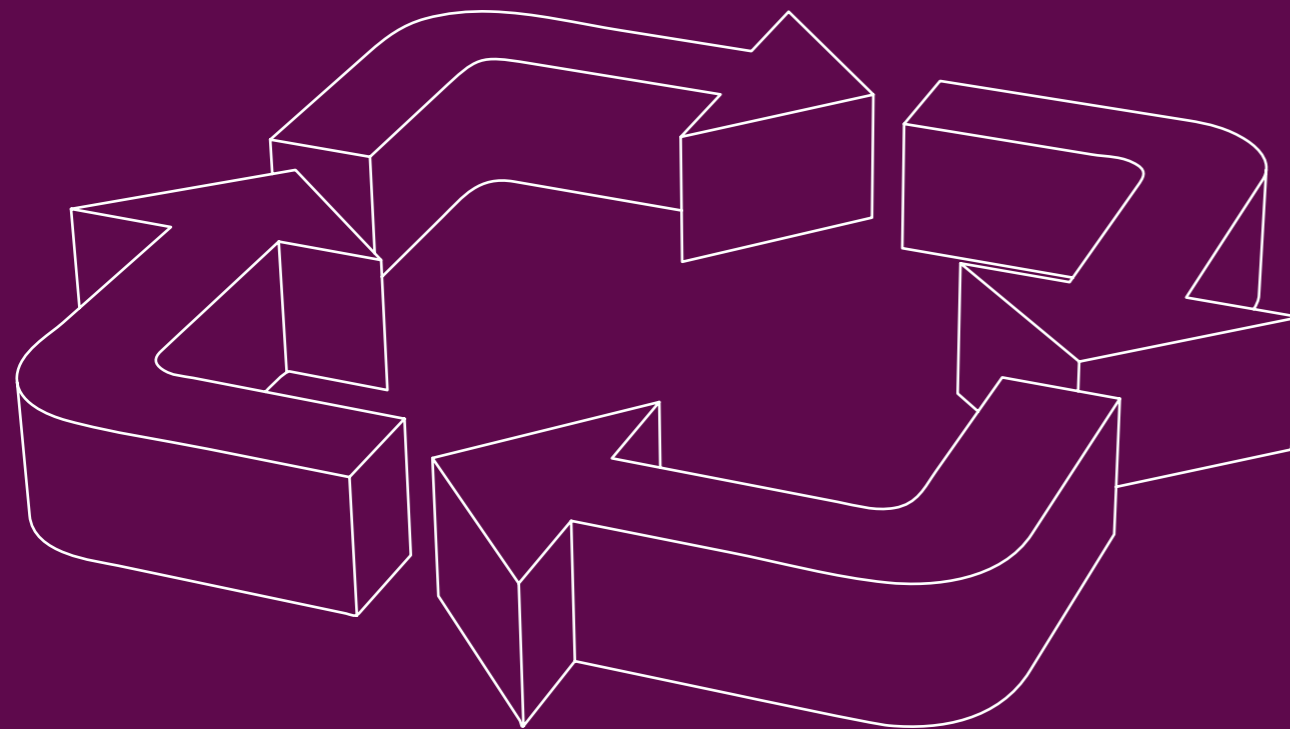


MATERIAL DESCRIPTION

Our materials are carefully selected to ensure optimal functionality and a long lifetime. A hospital environment, intensive use, and efficient cleaning methods require certain material properties for

various purposes. You are always welcome to contact your local office for advice on which product types that are best suited for your specific use.



ABS

Material Properties:
Rigid, durable and impact resistant.
A smooth surface finish and structurally stable.

Temperature:
Max. continuous + 70°C
Max. short-term. + 90°C

ACRYLITRILE-BUTADIENE-STYRENE

Chemical tolerance:
Withstands some weak acid, bases, oil and fats. Avoid solvents.
Cleaning:
In automatic washing machines* and with most common detergents and disinfectants on the market.



PMMA

Material Properties:
Rigid and durable clarity with 90% light transmission, UV-stable.

Temperature:
Max. continuous + 70°C
Max. short-term. + 90°C

POLYMETHYLMETHACRYLATE

Chemical tolerance:
Withstands weak acid, bases and non polar solvents.
Cleaning:
In automatic washing machines* and with most common detergents and disinfectants on the market.



EP

Material Properties:
Used as powder coating on steel, good mechanical strength, hard and durable.

Temperature:
Max. continuous + 100°C
Max. short-term. + 120°C

EPOXY

Chemical tolerance:
Resistant against bases and limited resistance against strong acid.
Cleaning:
In automatic washing machines* and with most common detergents and disinfectants on the market.



PPO

Material Properties:
Abrasion resistant, durable and hard, structurally stable.

Temperature:
Max. continuous + 110°C
Max. short-term. + 120°C

POLYPHENYLENOXIDE

Chemical tolerance:
Withstands weak acid and bases. Avoid solvents.
Cleaning:
In automatic washing machines* and with most common detergents and disinfectants on the market.



LAM

Material Properties:
Sturdy and durable surface, withstands normal impact influences.

Temperature:
Max. continuous + 150°C
Max. short-term. + 180°C

LAMINATE

Chemical tolerance:
Limited resistance against weak acid and bases.
Cleaning:
Wipe clean with damp cloth.



PS

Material Properties:
Rigid, durable and impact resistant.

Temperature:
Max. continuous + 60°C
Max. short-term. + 65°C

POLYSTYRENE

Chemical tolerance:
Resistant against water, acids and bases. No strong oxidized acids.
Cleaning:
In automatic washing machines* and with most common detergents and disinfectants on the market.

*"Materials Properties" are obtained from our suppliers. This must be considered as a guide and no responsibility can be accepted by Stanley Helathcare Solutions® for errors and omissions. You can obtain further technical information by approaching Stanley Helathcare Solutions® directly or one of our representatives.
*Avoid high temperatures and longer delays in washing machines than the suggested figures above.



Material Properties:
Durable, withstands light impact.

Temperature:
Max. not over + 40°C

MELAMINE

Chemical tolerance:
Limited resistance against weak acid and bases.
Cleaning:
Do not wash in automatic washing machines, wipe off with the most common detergents and disinfectants on the market.



Material Properties:
Rigid and durable. When stabilised becomes highly impact resistant. Smooth surface finish.

Temperature:
Max. continuous + 60°C
Max. short-term. + 75°C

POLYVINYLCHLORIDE

Chemical tolerance:
Resistant against acids and bases. Limited use with some solvents.
Cleaning:
In automatic washing machines* and with most common detergents and disinfectants on the market.



Material Properties:
High impact resistance, durable, with stands constant bending.

Temperature:
Max. continuous + 105°C
Max. short-term. + 150°C

POLYAMID

Chemical tolerance:
Resistant against fuels, lubricants and some solvents.
Cleaning:
In automatic washing machines* and with most common detergents and disinfectants on the market.



Material Properties:
A surface coating on steel. Very hard, durable and impact resistant. UV resistant.

Temperature:
Max. continuous + 80°C
Max. short-term. + 100°C

RILSAN

Chemical tolerance:
Insoluble in water and most organic solvents.
Cleaning:
In automatic washing machines* and with most common detergents and disinfectants on the market.



Material Properties:
Stiff, durable. Highly impact resistant. Virtually unbreakable. Autoclaveable.

Temperature:
Max. continuous + 125°C
Max. short-term. + 140°C

POLYCARBONATE

Chemical tolerance:
Resistant against oils and fats. Poor towards strong acids and bases.
Cleaning:
In automatic washing machines* and with most common detergents and disinfectants on the market.



Material Properties according to the norms below:

Steel round and flat oval:	DIN 2394
Steel profiled:	SIN SEL 065-67
Stainless profile steel tube:	DIN 4301
Acid resistant profile stainless steel:	DIN 4401

STEEL

Cleaning:
In automatic washing machines* and with most common detergents and disinfectants on the market.

*Materials Properties are obtained from our suppliers. This must be considered as a guide and no responsibility can be accepted by Stanley Helathcare Solutions® for errors and omissions. You can obtain further technical information by approaching Stanley Helathcare Solutions® directly or one of our representatives.
*Avoid high temperatures and longer delays in washing machines than the suggested figures above.