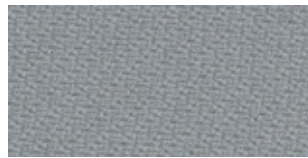


TWIST™
TWIST MELANGE™

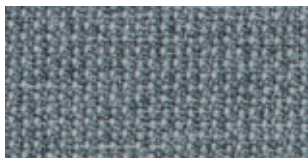
by Gabriel & myOpenspace



• Twist 60076



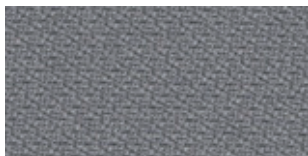
• Twist 60004



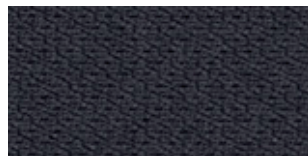
Twist Melange 60076



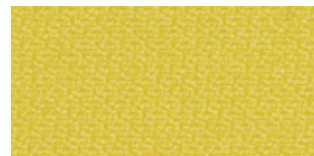
Twist Melange 60004



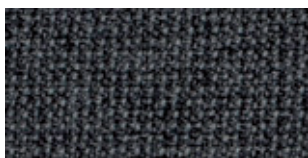
Twist 60011



• Twist 60021



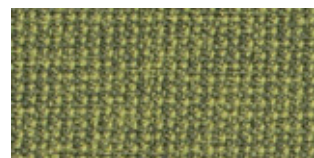
• Twist 62066



Twist Melange 60011



Twist Melange 60021



Twist Melange 62066

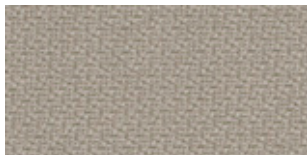


• Twist 60999

All colours are available

- stocked colours

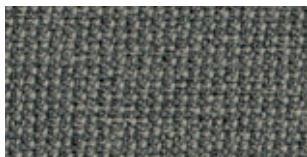
Please be aware that the PDF colour shades can appear different from the real fabric colours.



• Twist 61104



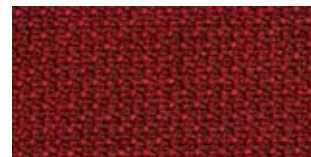
• Twist 63012



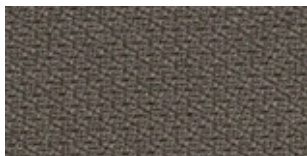
Twist Melange 61104



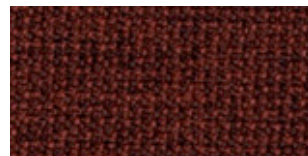
Twist 63075



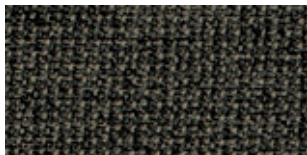
Twist Melange 63012



• Twist 61103



Twist Melange 63075



Twist Melange 61103



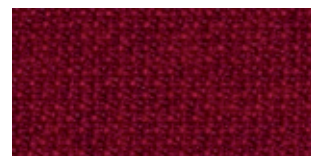
• Twist 61102



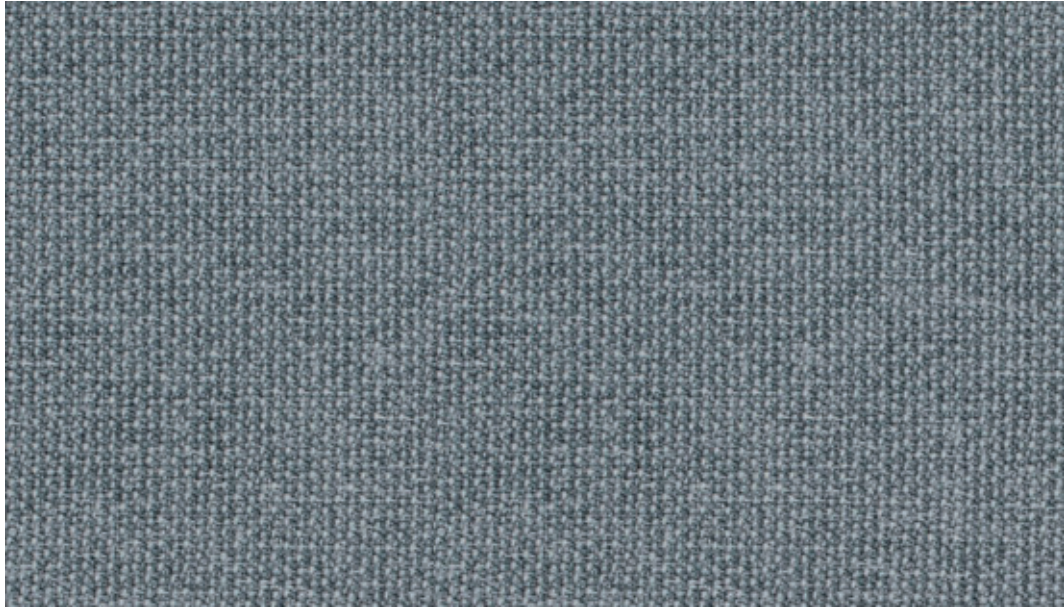
• Twist 64013



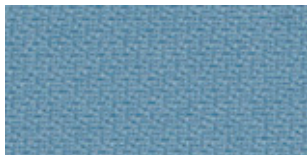
Twist Melange 61102



Twist Melange 64013



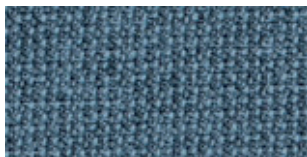
Twist Melange 60076



• Twist 67004



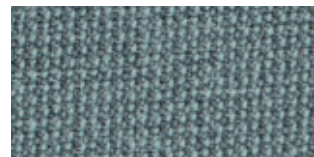
Twist 68118



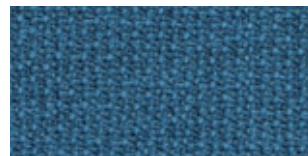
Twist Melange 67004



• Twist 66018



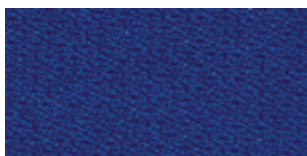
Twist Melange 68118



Twist Melange 66018



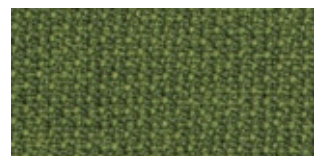
• Twist 68119



• Twist 65018



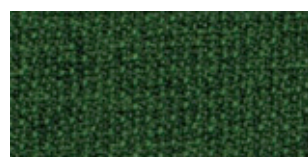
Twist 68120



Twist Melange 68119



Twist Melange 65018



Twist Melange 68120

All colours are available

- stocked colours

Please be aware that the PDF colour shades can appear different from the real fabric colours.

TWIST™

TWIST MELANGE™

Design no.	2445/2446/2447	
Fields of application	screen	
Material	Trevira CS	100%
Weight	345 g/lm · (11.13 oz/lin.yd.)	
Width	170 cm · (67")	
Colour fastness to light	scale 1-8, max. 8 - EN ISO 105 - B02	5-7
Colour fastness to rubbing	scale 1-5, max. 5 - EN ISO 105x12 (wet/dry)	4-5
Maintenance	dry cleaning	P(W)
	max. shrinkage 2,5%	
Flammability	DIN 4102-B1 · NF P 503-505 M1 · BS 476 part 7 · ASTM E 84 Will also pass other flammability standards. Flame retardant performance is dependent upon the foam used.	
US ACT	<ul style="list-style-type: none"> AATCC 16 Light fastness pass AATCC 8 or 116 wet/dry crocking pass ASTM E 84 pass 	
Design/Colours	Mette Krebs Petersen	
Subject to changes and colour differences		



Gabriel®

Hjulmagervej 55
 DK-9000 Aalborg
 Phone: +45 9630 3100
 Fax: +45 9813 2544
 Mail@gabriel.dk
 www.gabriel.dk



HOYEZ SAS
 71, rue de Lille
 59710 AVELIN - FRANCE
 T. +33 (0) 328.55.11.55
 myo@my-openspace.com
 www.my-openspace.com